



Architectural Aluminium Systems.
"Committed to building excellence"

Modern spaces for creative ideas

Our commitment to new build and refurbishment markets is supported by our significant investment in product development to meet the sectors increasingly stringent project requirements.



Residential | Education | Commercial | Entertainment



Unit 1B Brookside Court, Village Farm Ind Est , Pyle, Nr Bridgend , CF33 6BN

www.altecsystems.co.uk

Architectural

Architects and Planners

The UK's Leading Innovative Architectural Systems

Altec Architectural Systems, supply a comprehensive range of commercial and residential architectural systems including curtain walling facades.

Altec are leading the way with their innovative systems, carefully designed with quality, value for money, security and superior thermal efficiency in mind. Our systems are thermally broken to our patent pending thermal barrier which offers unparalleled insulation values, easily achieving Document L, BREEAM requirements and "A rated" WER's (Window Energy Ratings). As well as focusing on innovated products, our aim is to offer our services to architects, ensuring our high performance glazing systems meet the requirements for each project.



Innovation is one of our core values, and Altec are leading the way with their eco-friendly innovative glazing systems.

In collaboration with our clients, we create buildings that are environmentally responsible, modern, and true to their surroundings.

Product Range:

DTS-60 Windows (Fixed Lights and Casements)

DTS-60 Plus Windows. (Thermally Enhanced Fixed Lights and Casements)

DTS-70 Entrance Doors. (Available early 2013)

NTS-100 Ground Floor Treatments (Shop Front)

HTS-100 Ground Floor Treatments (Thermal Shop Front)

Ultrawall (Thermally Enhanced) Framing

ACW-55 Transom Drained Curtain Walling Facade (Thermally Enhanced)

ACW-55 Mullion Drained Curtain Walling Facade (Thermally Enhanced)

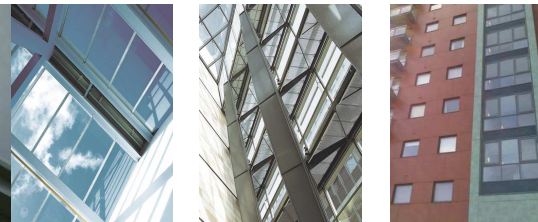
Our Products

Our team of designers have developed a comprehensive range of architectural aluminium systems, suitable for projects in the architectural new build and replacement markets. Such as, residential, commercial, education and leisure buildings. The systems have been designed with the following in mind:

- Thermal Performance
- Energy Efficiency
- Document L compliant
- DDA and Document M compliant
- Quality
- Security
- Acoustics
- Code for sustainable homes
- Weather and Durability
- For Double and Triple Glazed Units

All products have been tested to the highest standards in the UK.

Please contact our architectural advisors / technical department or go to www.altecsystems.co.uk for further information.



Residential

Houses,
Apartment Blocks,
Holiday Homes
Nursing Homes

Education

Schools
Colleges
Museums
Libraries

Commercial

Offices
Retail Stores
Hotels
Warehouses

Entertainment

Stadiums
Leisure Centres
Restaurants
Cinemas

